



Mentored Career Development in Clinical Translational Science (MCD-CTS/KL2) Info Session

Training Program Overview: Supercharge Your Research Career

Elizabeth Burner, MD, MPH, PhD

Director, Mentored Career Development in Clinical and
Translational Science (KL2) Training Program
Associate Professor, Emergency Medicine
Keck School of Medicine of USC
Email: elizabeth.burner@med.usc.edu

Amy West, PhD, ABPP

Co-Director, Mentored Career Development in Clinical and
Translational Science (KL2) Training Program
Professor, Pediatrics and Psychology
Keck School of Medicine of USC
Children's Hospital Los Angeles
Email: amwest@chla.usc.edu



About The Southern California Clinical and Translational Science Institute (SC CTSI)

Established in **2008** with support from the **University of Southern California (USC)**, **Children's Hospital Los Angeles (CHLA)** and **Clinical and Translational Science Awards (CTSA)** from the **National Institutes of Health (NIH)**, the **SC CTSI** is an organization devoted entirely to *increasing the success of translational science*.

“The SC CTSI is led by a team of faculty and staff members who have deep experience in developing and supporting clinical and translational research in all populations.”

Agenda

01 Alumni & Scholars Productivity

02 Eligibility

03 Financial Support: CTSI and Departmental

04 Educational Program Elements

05 Mentorship

06 Important Dates

Mentored Career Development Award (KL2)

The **Mentored Career Development in Clinical and Translational Science (MCD-CTS)** is a **three-year program** created to support research career development for health professionals, or individuals with research doctoral degrees who wish to pursue formal training and a career in clinical and translational research.



SC CTSI MCD-CTS Scholars and Alumni



Productivity of Alumni and Active Scholars – Cohorts 1-16 (n=70)

	Alumni (n=52)		Active (n=14)	
	KL2	IS	KL2	IS
	37	19	5	9
	98%	96%	KL2 Active in CTR	
			IS Active in CTR	
	KL2	IS	Total	
Grant Funding	\$78,366,129	\$38,863,961	\$117,230,090	
Publications	1836	488	2324	

CTR – Clinical and Translational Research
 IS – Institutional Scholar



Clinical Translational Paradigm

Basic Research

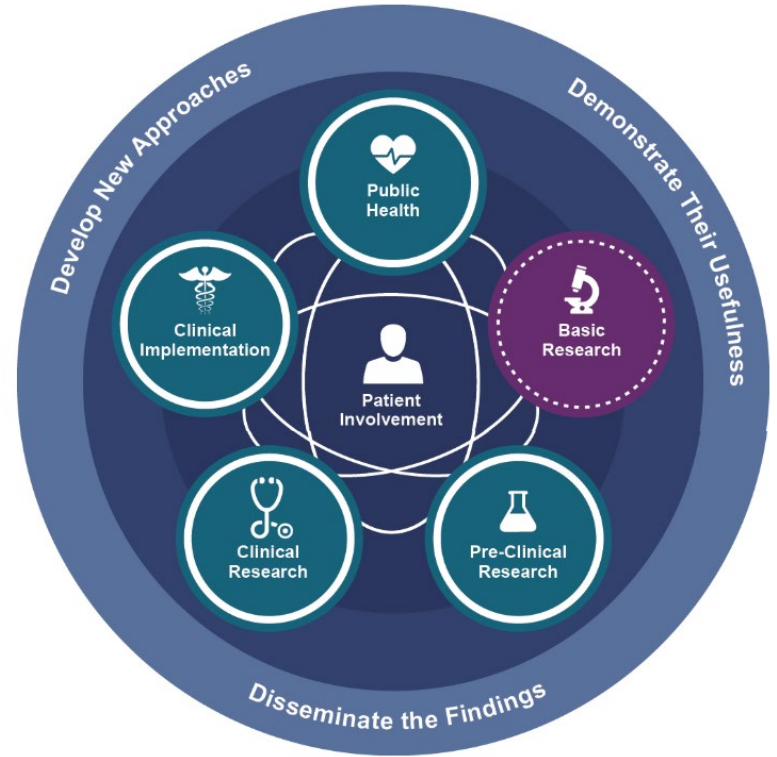
Pre-Clinical Research

Clinical Research

Clinical

Implementation

Public Health



<https://ncats.nih.gov/translation/spectrum>



Who is This For?

Early-stage researchers at USC and CHLA who are investing in a career in clinical & translational research



Clinicians transitioning to research career, with little prior research training



Early Clinician Scientists, support and data needed for Independent Awards



Basic Scientists (usually PhD alone), transitioning to clinical research



Who is Eligible?

**Professional
Doctoral Degree** (of
any discipline) or
Research PhD

Junior Faculty or
anticipating promotion
to **Faculty status** by
program start date

**U.S. Citizen, Non-
Citizen National, or
Permanent Resident**

75% effort available
for mentored research
and career
development for 3
years

Committed **Mentoring
Team** and
Department



Financial Support

Type	SC CTSI Support	Department Support
Duration	2-years	1-year
Salary Support	75% FTE <i>Up to \$120K + Fringe Benefits Department responsible for cost share and remaining 25% FTE</i>	75% FTE for research and career development <i>Remaining 25% FTE at department's discretion</i>
Research Support	\$20,000/year	\$20,000

Letter of Intent Due: August 7, 2026

Application Due: August 28, 2026

Program Start April 1, 2027



Core Activities

**Courses in Clinical
Translational
Research (3)**

**KL2/K12
National Speaker
Series**

**KL2-specific
Educational
Offerings**

**Writing
Accountability
Challenge**

**Mentee and
Mentor Training**

**GROWTH
(Near-peer
Mentoring)**

Coaching

**Baseline
Presentation &
Works-in-Progress**

**Quality
by
Design
(DbD)**

**Community
Engagement
(CE) Studios**

**Translational
Science
Conference**

**Individualized
Coursework**

**Individualized
Grant Writing
Support**

**SC CTSI
Seminar
Series***

**Research
Success Teams***

* We encourage attendance at seminars that are strongly recommended.



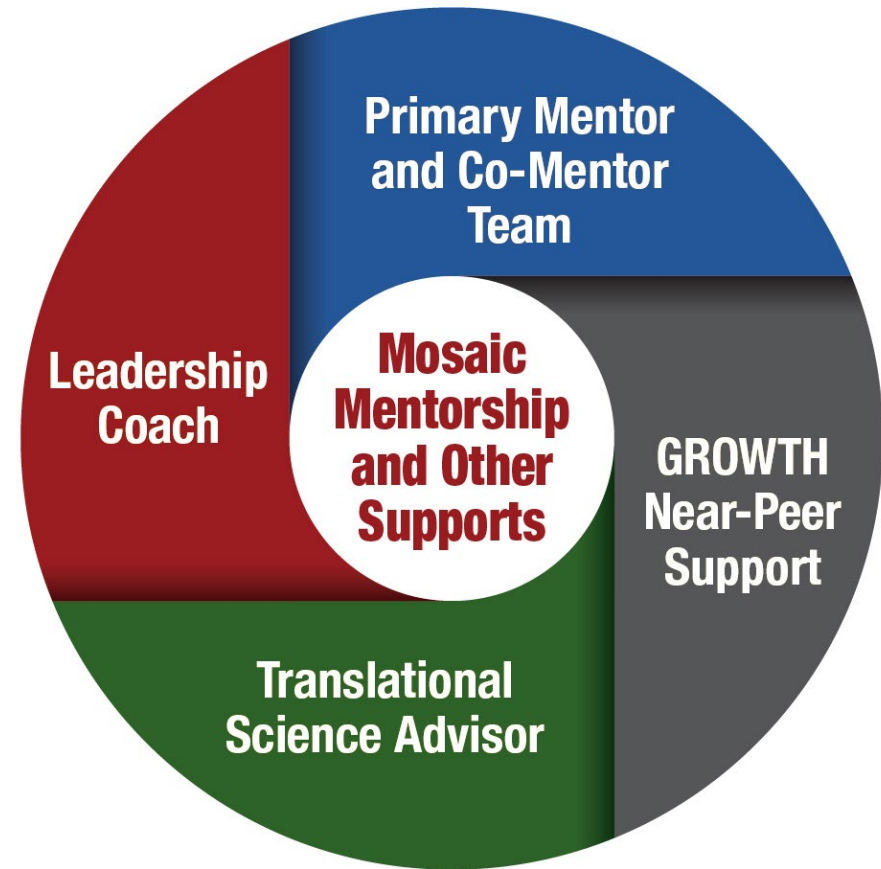
Activities to Support Scholar Development in Core Translational Scientist Characteristics

ACTIVITY	DOMAIN EXPERT	BOUNDARY CROSSER	SYSTEMS THINKER	RIGOROUS RESEARCHER	SKILLED COMMUNICATOR	TEAM PLAYER	PROCESS INNOVATOR	SHARED WITH UM1
Quality by Design			●	●			●	●
Mentored Research Projects	●			●	●			
Works-in-Progress Sessions		●			●			
Core Courses for Masters in CTR	●			●	●	●		
Advanced Training Track for Translational Research Domains	●			●				
Community Engagement Studios		●	●		●	●		●
GROWTH Near-Peer Support		●			●	●		
Mentee and Mentor Training					●	●		
Leadership Coaching			●		●	●		
Translational Science Aim			●			●	●	●
Advanced Training Track for Translational Science Skill Sets			●	●			●	
Additional Support for Clinical Trials	●		●	●			●	●



MCD-CTS/ KL2 Program

Mosaic Mentoring Model



Mentorship

Application Process



Expected Mentorship:

- Advise on research design and career development goals
- Collaborate in reviewing all components of the grant
- Provide letter(s) of support
- Facilitate letter of departmental support
- Participate in interview if mentee advances in process
- Anticipate administrative and financial support needs

Mentorship

During Training Program

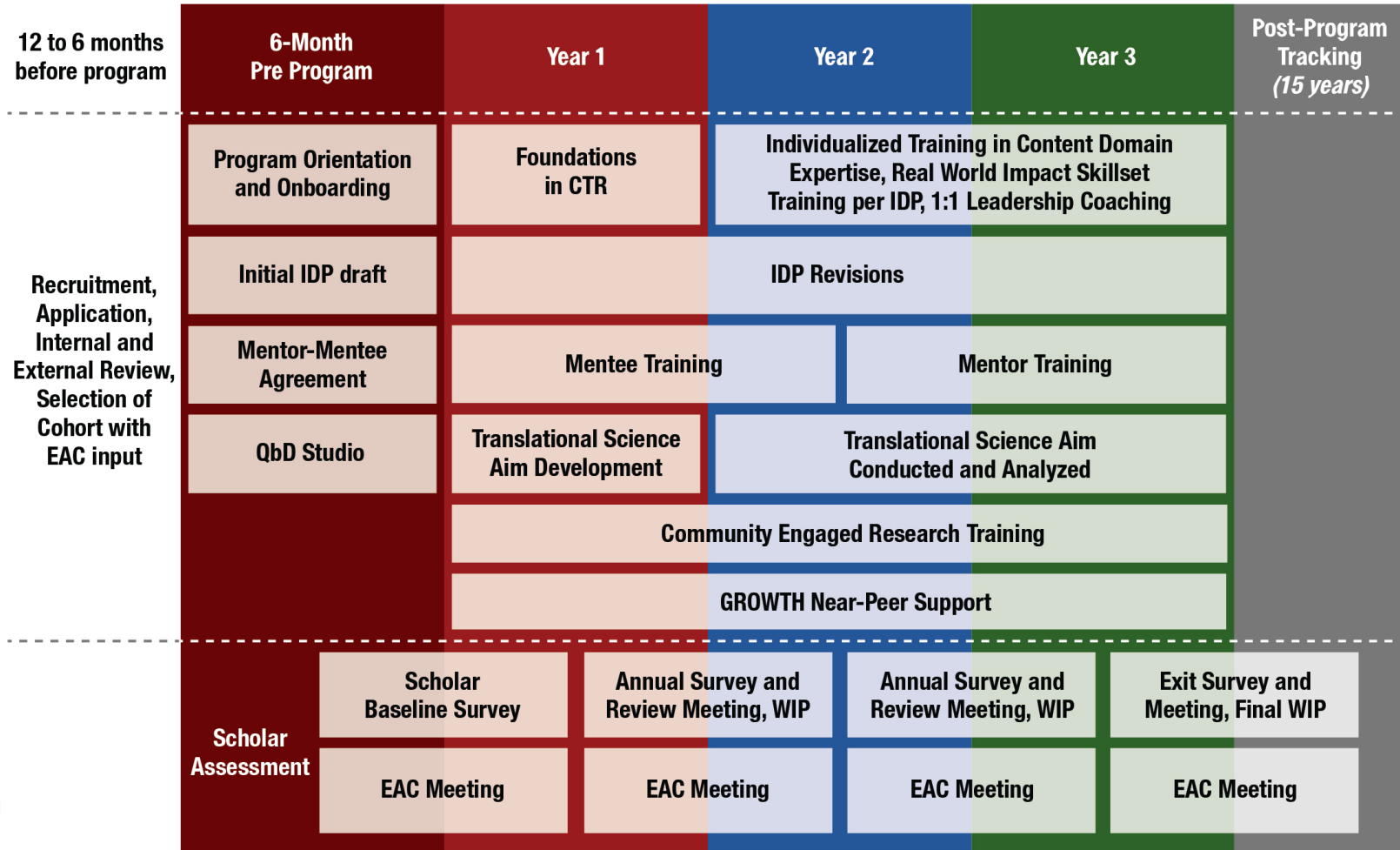


Responsibilities:

- Ensure protected time for mentee while in the program
 - Regular meetings (individually and with entire mentor team)
 - Evaluate progress on IDP
 - With MCD-CTS leadership, develop mentoring strategies for the training program
 - Attend MCD-CTS Work-in-Progress Sessions (2x/year)
 - Attend Mentoring Workshops
-



K12 Training Program Flow Diagram



Additional Info Sessions

**Recording available of KL2 Training
Program Overview on MCD-CTS Application
Details Webpage**



**KL2 Application Portal Walkthrough
Date: 6/16/26
Time: 12:00PM**



**KL2 Q&A – Ask Us Anything
Date: 7/14/26
Time: 9:00AM**



Important Dates

Application Process

Letter of Intent

Due Date

August 7, 2026 (5:00PM)

Application Submission

June 1, 2026 – August 28, 2026 (5:00PM)

Review

Application Reviews

September 2026 – October 2026

Interview Notification

October 19, 2026 – October 23, 2026

Applicant Interviews with Applicant and Mentor

Dates/Times TBD

(Info to be updated by mid-July 2026 on SC CTSI website.)

Award Notification & Appointment

Notification of Awards

December 4, 2026

Awardee Orientation (Awardee and Mentor)

Dates/Times TBD

(Conducted before Christmas break 2026. Info to be updated on SC CTSI website by mid-July 2026.)

Start Date

MCD-CTS Program Start Date

April 1, 2027



University of Southern California • Children's Hospital Los Angeles



KL2@sc-ctsi.org

or

Jeanne Dzekov McKean
Program Manager
dzekov@med.usc.edu



@SoCalCTSI



(323) 442-CTSA



@SoCalCTSI

Questions?

